



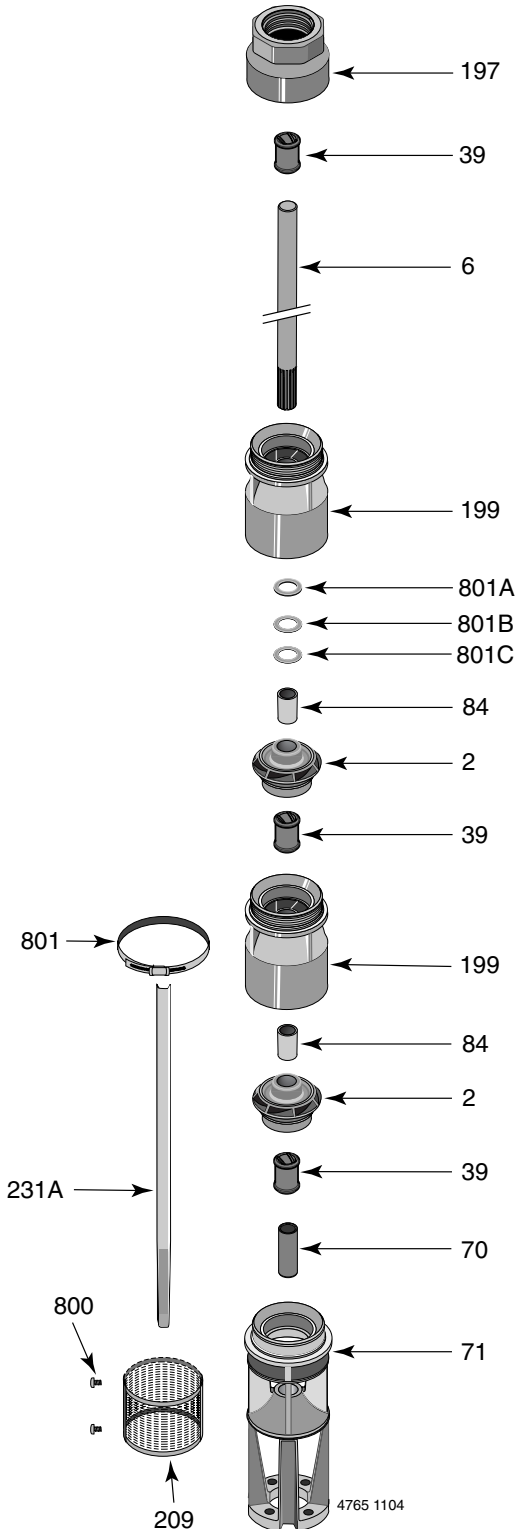
Submersible Turbine Repair Parts

Section	ST
Page	160.1
Date	June 13, 2007
Supersedes 12/1/04	

7T-500

6" Motor

7T-500 Common Parts Groups Repair Parts List



Item No.	Part Description	Part Number
39	Rubber Bearing	S13636
70	Splined Coupling	387630500
71	Inlet Bracket for 6" Motor	H05843
84	Collet, Impeller	S05301
197	Discharge Connector, 5" FNPT x 6" MNPT	L06689
199	Top Bowl and Bearing Assembly (Item No. 39)	B82482
209	Suction Screen	L07631
800	Pan Head Tapping Screw #8-15 (2 Req.)	S29885
801	Cable Guard Clamp (2 Req.)	M08595
801A	Upthrust Spacer, 1/8" Brass	M11544
801B	Upthrust Spacer, 1/32" 416SS (as required)	M11295
801C	Upthrust Spacing Shim, 1/8" 416SS (as req.)	M11149
•	Bolt Kit, 6" Motor	B69659
•	Pop Rivet, 5/32" x 3/8" lg. (2 Req.)	M10172
•	Nameplate	M12165
•	Owner's Manual	BE215

• Not illustrated.

Additional Staging (Quantity: 1 each per stage)

Item Number	Part Number	Part Description
39	S13636	Rubber Bearing (included in bowl)
84	S05301	Impeller Collet
199	B82482	Intermediate Bowl**

** Includes S13636 Bearing.

Cable Guard Length*

Stages	Length (In.)
1	16.12
2	22.62
3	29.12
4	35.62
5	42.12

* Sold in 12' lengths only, Part Number 308666000.

Consult owner's manual for correct assembly and adjustment procedures.



Submersible Turbine Repair Parts

Section	ST
Page	160.2
Date	December 1, 2004
Supersedes NEW	

7T-500
6" Motor

Available Impellers*

Description	Part Number	Size (In.)
"A" Full Trim	M11672	5.38 x 4.75
"B" 5% Trim	M11941	5.31 x 4.69
"C" 10% Trim	M11950	4.69 x 4.31

* 20° trim angle.

7T-500 Impeller Specifications

Catalog Number	Horsepower	416 SS Shaft§	Primary Trims	Part Number†	Trim (In.)	Secondary Trim	Part Number	Trim (In.)
B77561	10	M11742	1	M11852	4.88 x 4.23			
B77562	15	M11742	1	M11672	5.38 x 4.75			
B77563	20	M11743	2	M11950	4.69 x 4.31			
B77564	25	M11743	2	M11672	5.38 x 4.75			
B77565	30	M11744	3	M11950	4.69 x 4.31			
B77566	40	M11744	3	M11672	5.38 x 4.75			
B77567	50	M11745	4	M11672	5.38 x 4.75			
B77568	60	M11746	5	M11941	5.31 x 4.69			

† Key #2 – Impeller.

§ Key #6 – Pump Shaft.



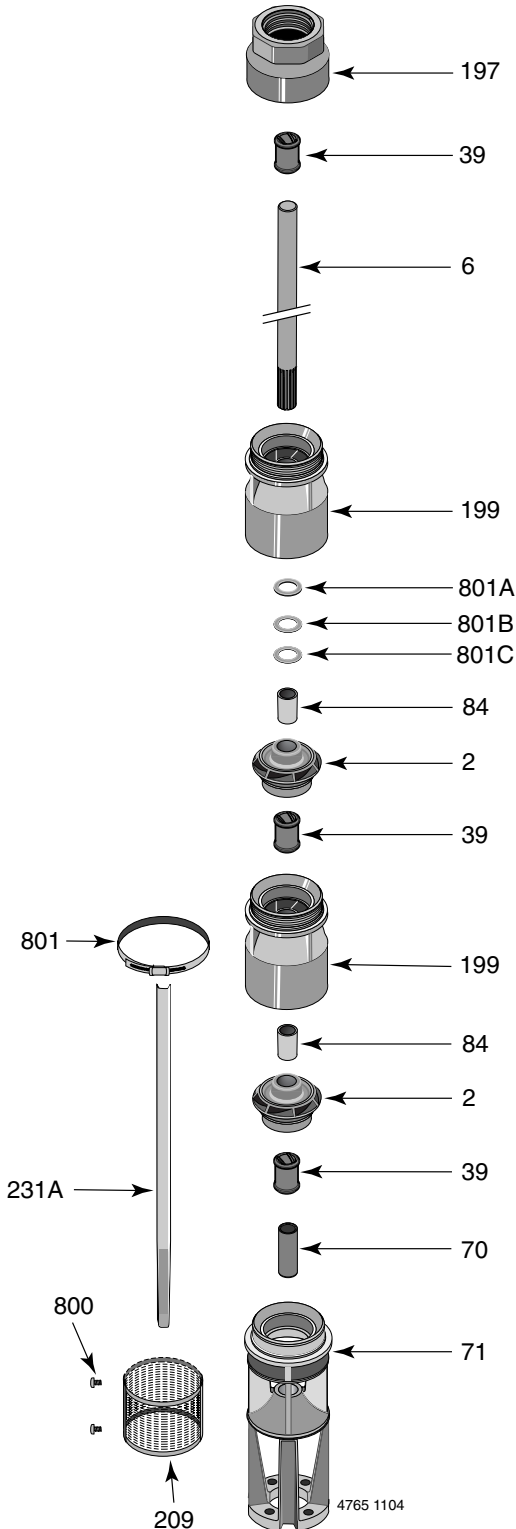
Submersible Turbine Repair Parts

Section	ST
Page	170.1
Date	June 13, 2007
Supersedes 12/1/04	

7T-500

8" Motor

7T-500 Common Parts Groups Repair Parts List



Item No.	Part Description	Part Number
39	Rubber Bearing	S13636
70	Splined Coupling, 8" Motor	S32704
71	Inlet Bracket for 8" Motor	H05844
84	Collet, Impeller	S05301
197	Discharge Connector, 5" FNPT x 6" MNPT	L06689
199	Top Bowl and Bearing Assembly (Item No. 39)	B82482
209	Suction Screen	L07631
800	Pan Head Tapping Screw #8-15 (2 Req.)	S29885
801	Cable Guard Clamp (2 Req.)	M10191
801A	Upthrust Spacer, 1/8" Brass	M11544
801B	Upthrust Spacer, 1/32" 416SS (as required)	M11295
801C	Upthrust Spacing Shim, 1/8" 416SS (as req.)	M11149
	Lock Washer, Spring (4 req.)	S23093
	Capscrew, 5/8"-11 x 2-1/2" lg. (4 req.)	S27005
	• Pop Rivet, 5/32" x 3/8" lg. (2 Req.)	M10172
	• Nameplate	M12165
	• Owner's Manual	BE215

• Not illustrated.

Additional Staging (Quantity: 1 each per stage)

Item Number	Part Number	Part Description
39	S13636	Rubber Bearing (included in bowl)
84	S05301	Impeller Collet
199	B82482	Intermediate Bowl**

** Includes S13636 Bearing.

Cable Guard Length*

Stages	Length (In.)
6	49.43
8	62.43
10	75.43

* Sold in 12' lengths only, Part Number M10252.

Consult owner's manual for correct assembly and adjustment procedures.



Submersible Turbine Repair Parts

Section	ST
Page	170.2
Date	December 1, 2004
Supersedes NEW	

7T-500
8" Motor

Available Impellers*

Description	Part Number	Size (In.)
"A" Full Trim	M11672	5.39 x 4.75
"B" 5% Trim	M11941	5.31 x 4.69
"C" 10% Trim	M11950	4.69 x 4.31

* 25° trim angle.

7T-500 Impeller Specifications

Catalog Number	Horsepower	416 SS Shaft§	Primary Trims	Part Number†	Trim (In.)	Secondary Trim	Part Number	Trim (In.)
B77569	75	M11762	6	M11941	5.31 x 4.69			
B77570	100	M11764	8	M11941	5.31 x 4.69			
B77571	125	M11766	10	M11941	5.31 x 4.69			

† Key #2 – Impeller.

§ Key #6 – Pump Shaft.