

**BERKELEY® B2-1/2JPBM****Cast Iron Impeller**

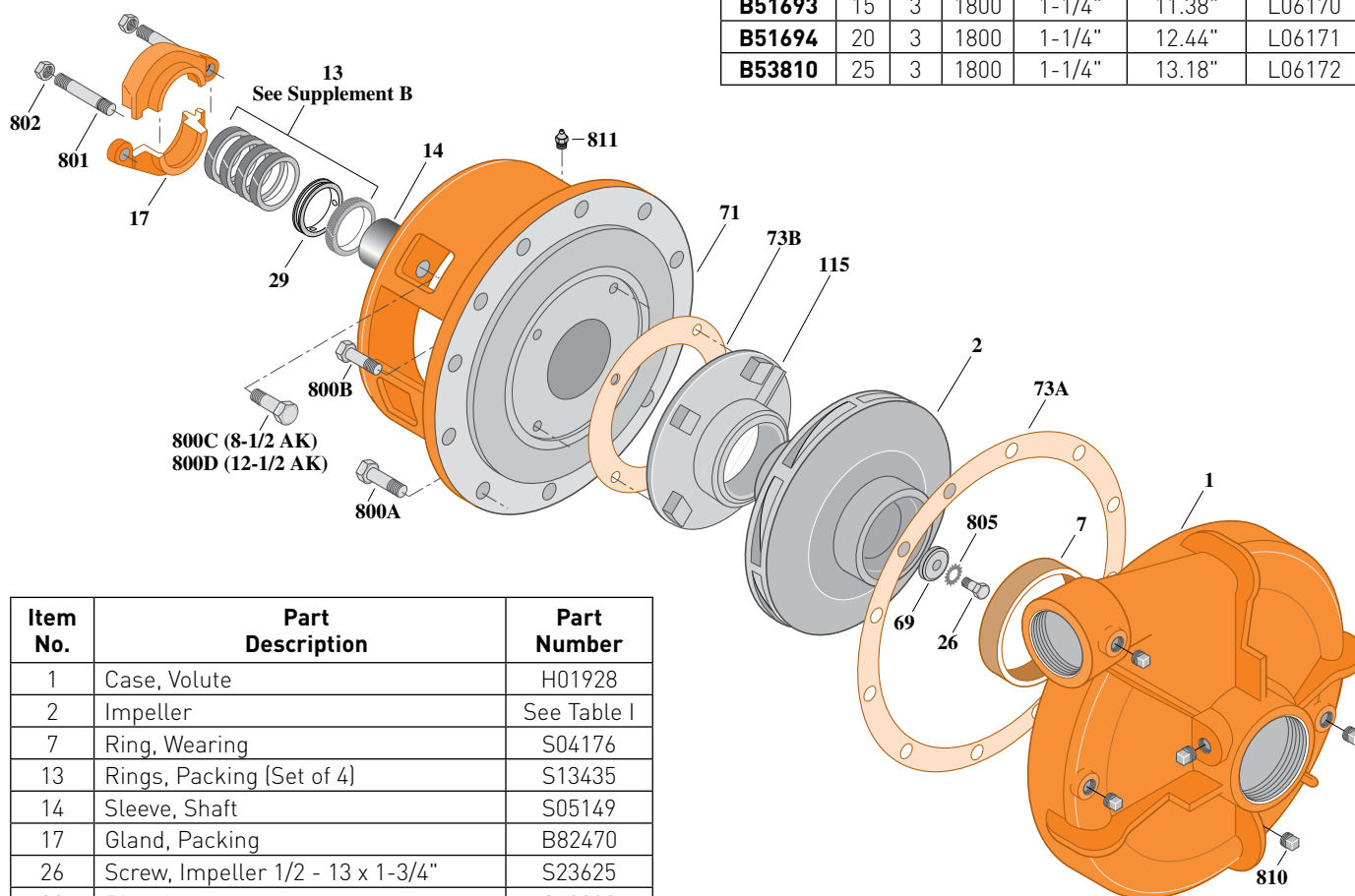
Threaded Case (NPT), Packing Construction

## ELECTRIC MOTOR DRIVE

|                     |               |
|---------------------|---------------|
| Section             | CC            |
| Page                | 150.1         |
| Date                | March 4, 2013 |
| Supersedes 01/01/04 |               |

**Table I**

| B/M No.       | HP | PH | RPM  | "U" Dim. | Imp. Dia. | Imp. No. |
|---------------|----|----|------|----------|-----------|----------|
| <b>B51693</b> | 15 | 3  | 1800 | 1-1/4"   | 11.38"    | L06170   |
| <b>B51694</b> | 20 | 3  | 1800 | 1-1/4"   | 12.44"    | L06171   |
| <b>B53810</b> | 25 | 3  | 1800 | 1-1/4"   | 13.18"    | L06172   |



1768 0495

| Item No. | Part Description                      | Part Number  |
|----------|---------------------------------------|--------------|
| 1        | Case, Volute                          | H01928       |
| 2        | Impeller                              | See Table I  |
| 7        | Ring, Wearing                         | S04176       |
| 13       | Rings, Packing (Set of 4)             | S13435       |
| 14       | Sleeve, Shaft                         | S05149       |
| 17       | Gland, Packing                        | B82470       |
| 26       | Screw, Impeller 1/2 - 13 x 1-3/4"     | S23625       |
| 29       | Ring, Lantern                         | S19200       |
| 32       | Key, 1/4 x 2-1/4" (See Note)          | S23677       |
| 69       | Washer, Impeller                      | S06319       |
| 71       | Bracket                               | See Table II |
| 73A      | Gasket, Volute                        | S06271       |
| 73B      | Gasket, Balance Ring                  | S09943       |
| 115      | Ring, Balance                         | M05115       |
| 800A     | Capscrew, 5/8 - 11 x 1-1/2" (12 Req.) | S26999       |
| 800B     | Capscrew, 1/2 - 13 x 1-1/2" (4 Req.)  | S26916       |
| 800C     | Capscrew, 3/8 - 16 x 1-1/2" (4 Req.)  | S26830       |
| 801      | Stud, 3/8 - 16 x 2-1/2" (2 Req.)      | S04438       |
| 802      | Nut, Hex 3/8 - 16 (2 Req.)            | S23343       |
| 805      | Washer, Lock                          | S23038       |
| 810      | Plug, Pipe 1/2 NPT (6 Req.)           | S23717       |
| 811      | Fitting, Grease                       | S23700       |
| 812      | Elbow, Street                         | S25421       |

**Table II**

| HP | PH | Bracket No. | "AK" Fit | "U" Dim. | Motor Frame |
|----|----|-------------|----------|----------|-------------|
| 15 | 3  | H02384      | 8-1/2"   | 1-1/4"   | 254JP       |
| 20 | 3  | H02384      | 8-1/2"   | 1-1/4"   | 256JP       |
| 25 | 3  | H01601      | 12-1/2"  | 1-1/4"   | 284JP       |

**NOTE:** For an explanation of the tabulated material found on this page and for impeller key location, refer to **Supplement A** located at the beginning of this section.

**BERKELEY® B2-1/2JPBMS**

## ELECTRIC MOTOR DRIVE

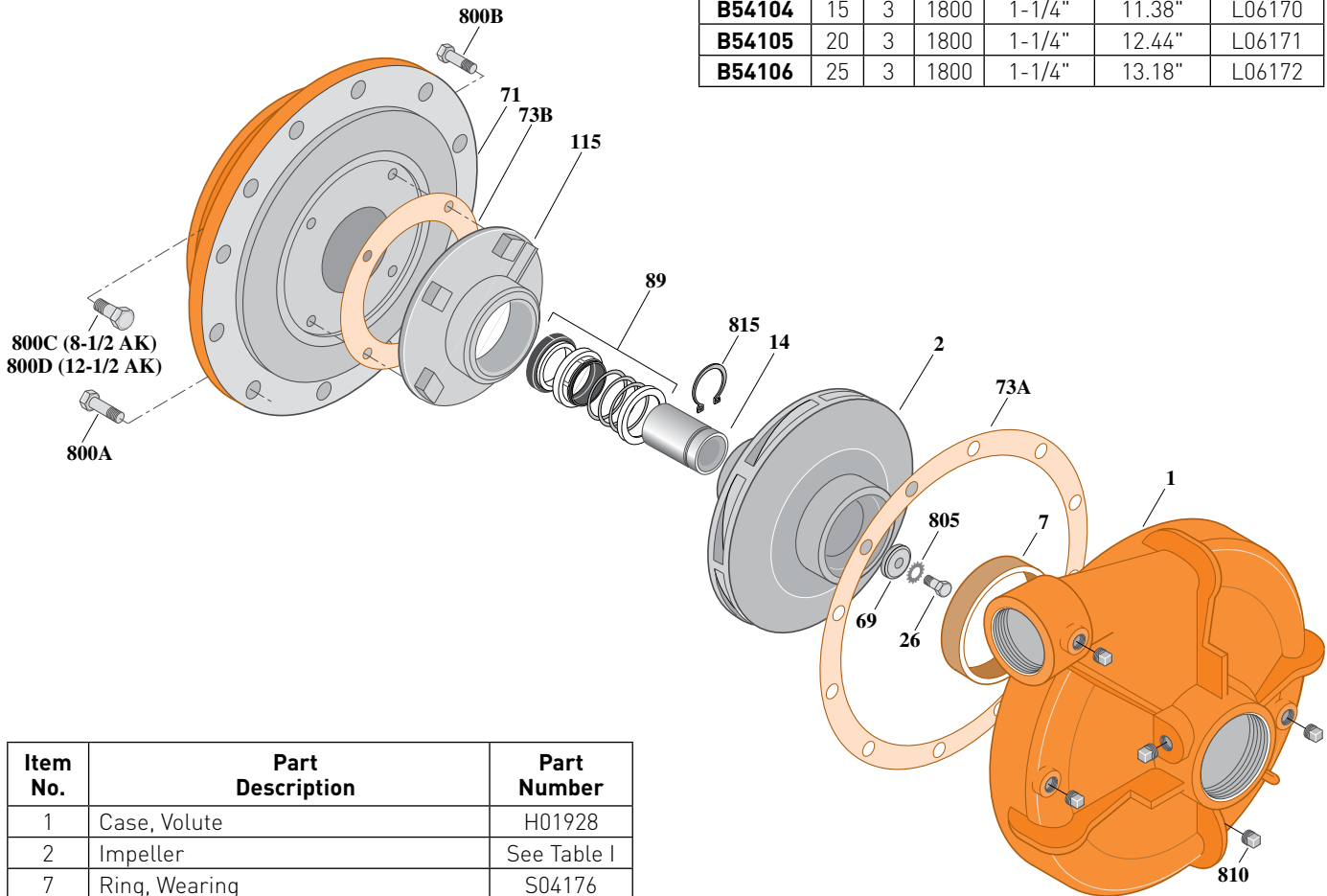
## Cast Iron Impeller

Threaded Case (NPT), Mechanical Shaft Seal Construction

|                     |               |
|---------------------|---------------|
| Section             | CC            |
| Page                | 150.2         |
| Date                | March 4, 2013 |
| Supersedes 01/01/04 |               |

**Table I**

| B/M No.       | HP | PH | RPM  | "U" Dim. | Imp. Dia. | Imp. No. |
|---------------|----|----|------|----------|-----------|----------|
| <b>B54104</b> | 15 | 3  | 1800 | 1-1/4"   | 11.38"    | L06170   |
| <b>B54105</b> | 20 | 3  | 1800 | 1-1/4"   | 12.44"    | L06171   |
| <b>B54106</b> | 25 | 3  | 1800 | 1-1/4"   | 13.18"    | L06172   |



1691 0295

| Item No. | Part Description                      | Part Number  |
|----------|---------------------------------------|--------------|
| 1        | Case, Volute                          | H01928       |
| 2        | Impeller                              | See Table I  |
| 7        | Ring, Wearing                         | S04176       |
| 14       | Sleeve, Shaft                         | S18869       |
| 26       | Screw, Impeller 1/2 - 13 x 1-1/2"     | S23623       |
| 32       | Key, 1/4 x 2-1/4" [See Note]          | S23677       |
| 69       | Washer, Impeller                      | S06319       |
| 71       | Bracket                               | See Table II |
| 73A      | Gasket, Volute Case                   | S06271       |
| 73B      | Gasket, Balance Ring                  | S09943       |
| 89       | Seal, Mechanical Shaft                | S32015       |
| 115      | Ring, Balance                         | M06646       |
| 800A     | Capscrew, 5/8 - 11 x 1-1/2" [12 Req.] | S26999       |
| 800B     | Capscrew, 1/2 - 13 x 1-1/2" [4 Req.]  | S26916       |
| 800C     | Capscrew, 3/8 - 16 x 1" [4 Req.]      | S26826       |
| 805      | Washer, Lock                          | S23038       |
| 810      | Plug, Pipe 1/2 NPT [6 Req.]           | S23717       |
| 815      | Ring, Retaining                       | S16767       |

**Table II**

| HP | PH | Bracket No. | "AK" Fit | "U" Dim. | Motor Frame |
|----|----|-------------|----------|----------|-------------|
| 15 | 3  | H03300      | 8-1/2"   | 1-1/4"   | 254JM       |
| 20 | 3  | H03300      | 8-1/2"   | 1-1/4"   | 256JM       |
| 25 | 3  | H03301      | 12-1/2"  | 1-1/4"   | 284JM       |

**NOTE:** For an explanation of the tabulated material found on this page and for impeller key location, refer to **Supplement A** located at the beginning of this section.

**BERKELEY® B2-1/2JPBM****Silicon Bronze Impeller**

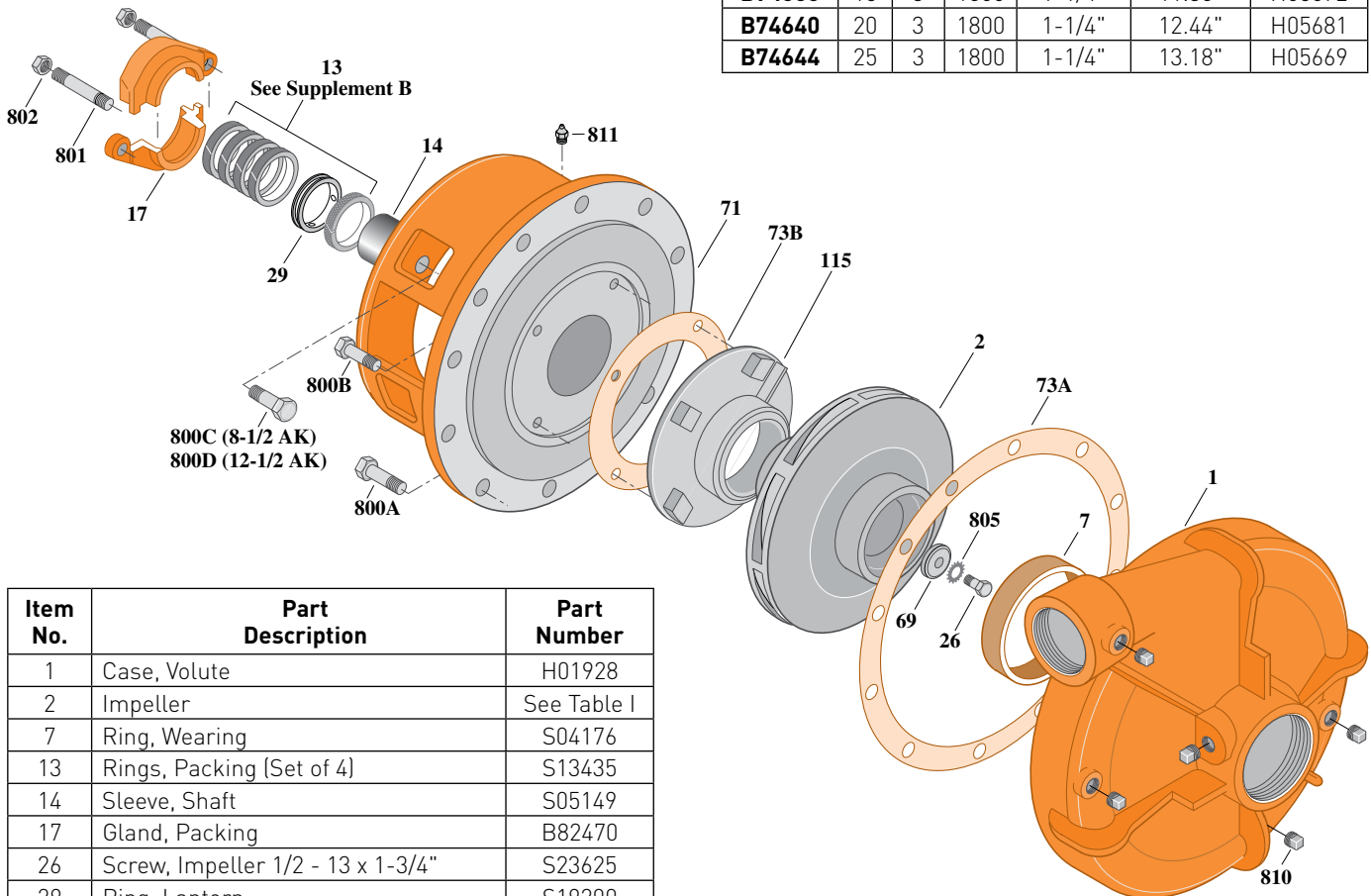
Threaded Case (NPT), Packing Construction

## ELECTRIC MOTOR DRIVE

|                     |               |
|---------------------|---------------|
| Section             | CC            |
| Page                | 150.3         |
| Date                | March 4, 2013 |
| Supersedes 01/01/04 |               |

**Table I**

| B/M No.       | HP | PH | RPM  | "U" Dim. | Imp. Dia. | Imp. No. |
|---------------|----|----|------|----------|-----------|----------|
| <b>B74656</b> | 15 | 3  | 1800 | 1-1/4"   | 11.38"    | H05672   |
| <b>B74640</b> | 20 | 3  | 1800 | 1-1/4"   | 12.44"    | H05681   |
| <b>B74644</b> | 25 | 3  | 1800 | 1-1/4"   | 13.18"    | H05669   |



1768 0495

| Item No. | Part Description                      | Part Number  |
|----------|---------------------------------------|--------------|
| 1        | Case, Volute                          | H01928       |
| 2        | Impeller                              | See Table I  |
| 7        | Ring, Wearing                         | S04176       |
| 13       | Rings, Packing (Set of 4)             | S13435       |
| 14       | Sleeve, Shaft                         | S05149       |
| 17       | Gland, Packing                        | B82470       |
| 26       | Screw, Impeller 1/2 - 13 x 1-3/4"     | S23625       |
| 29       | Ring, Lantern                         | S19200       |
| 32       | Key, 1/4 x 2-1/4" (See Note)          | S23677       |
| 69       | Washer, Impeller                      | S06319       |
| 71       | Bracket                               | See Table II |
| 73A      | Gasket, Volute                        | S06271       |
| 73B      | Gasket, Balance Ring                  | S09943       |
| 115      | Ring, Balance                         | M05115       |
| 800A     | Capscrew, 5/8 - 11 x 1-1/2" [12 Req.] | S26999       |
| 800B     | Capscrew, 3/8 - 16 x 1-1/2" [4 Req.]  | S26830       |
| 800C     | Capscrew, 1/2 - 13 x 1-1/2" [4 Req.]  | S26916       |
| 800D     | Capscrew, 5/8 - 11 x 1-1/2" [4 Req.]  | S26999       |
| 801      | Stud, 3/8 - 16 x 2-1/2" [2 Req.]      | S04438       |
| 802      | Nut, Hex 3/8 - 16 [2 Req.]            | S23343       |
| 805      | Washer, Lock                          | S23038       |
| 810      | Plug, Pipe 1/2 NPT [6 Req.]           | S23717       |
| 811      | Fitting, Grease                       | S23700       |

**Table II**

| HP | PH | Bracket No. | "AK" Fit | "U" Dim. | Motor Frame |
|----|----|-------------|----------|----------|-------------|
| 15 | 3  | H02384      | 8-1/2"   | 1-1/4"   | 254JP       |
| 20 | 3  | H02384      | 8-1/2"   | 1-1/4"   | 256JP       |
| 25 | 3  | H01601      | 12-1/2"  | 1-1/4"   | 284JP       |

**NOTE:** For an explanation of the tabulated material found on this page and for impeller key location, refer to **Supplement A** located at the beginning of this section.

**BERKELEY®** B2-1/2JPBMS

## Silicon Bronze Impeller

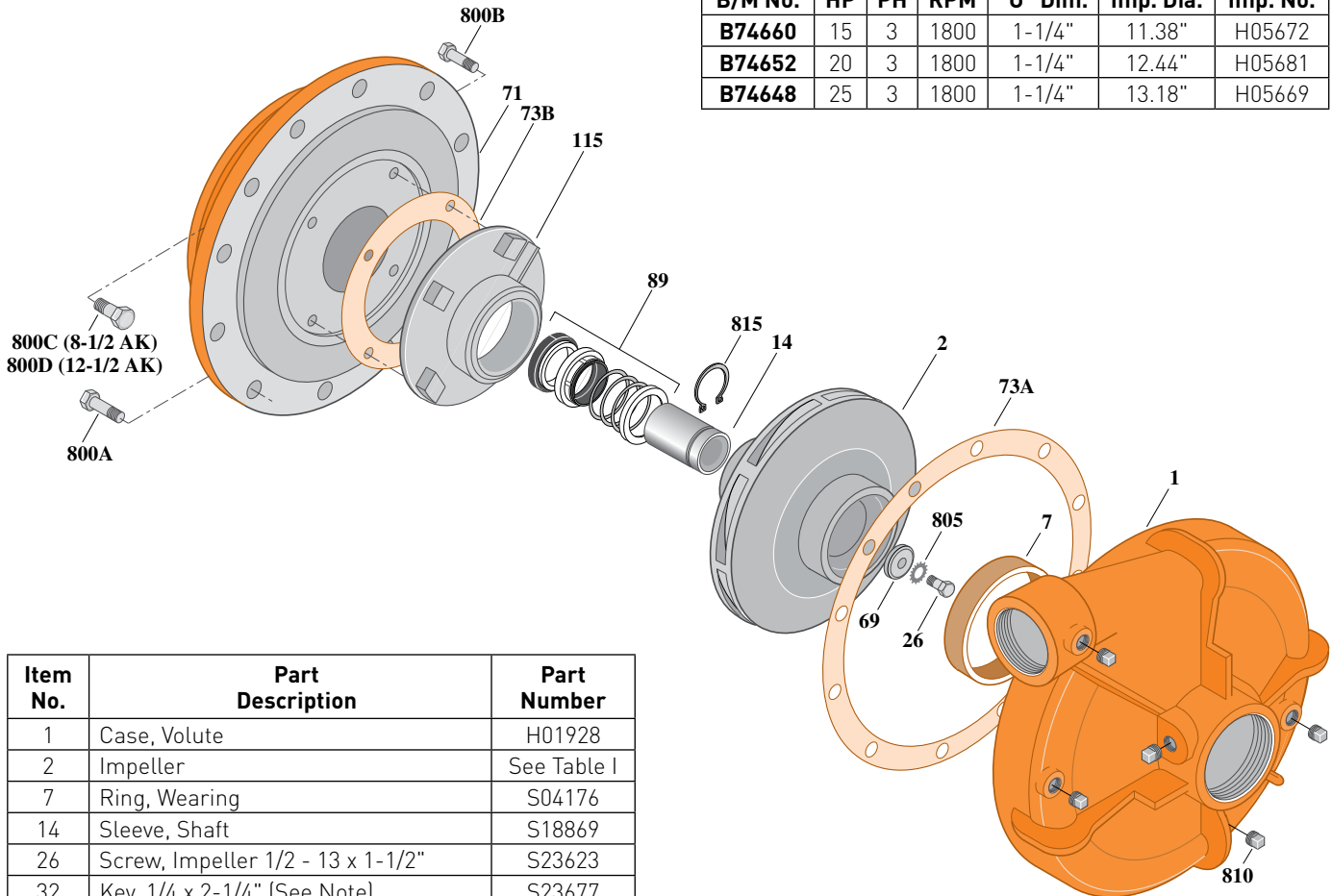
Threaded Case (NPT), Mechanical Shaft Seal Construction

ELECTRIC MOTOR DRIVE

|                     |               |
|---------------------|---------------|
| Section             | CC            |
| Page                | 150.4         |
| Date                | March 4, 2013 |
| Supersedes 01/01/04 |               |

**Table I**

| B/M No.       | HP | PH | RPM  | "U" Dim. | Imp. Dia. | Imp. No. |
|---------------|----|----|------|----------|-----------|----------|
| <b>B74660</b> | 15 | 3  | 1800 | 1-1/4"   | 11.38"    | H05672   |
| <b>B74652</b> | 20 | 3  | 1800 | 1-1/4"   | 12.44"    | H05681   |
| <b>B74648</b> | 25 | 3  | 1800 | 1-1/4"   | 13.18"    | H05669   |



1691 0295

| Item No. | Part Description                      | Part Number  |
|----------|---------------------------------------|--------------|
| 1        | Case, Volute                          | H01928       |
| 2        | Impeller                              | See Table I  |
| 7        | Ring, Wearing                         | S04176       |
| 14       | Sleeve, Shaft                         | S18869       |
| 26       | Screw, Impeller 1/2 - 13 x 1-1/2"     | S23623       |
| 32       | Key, 1/4 x 2-1/4" (See Note)          | S23677       |
| 69       | Washer, Impeller                      | S06319       |
| 71       | Bracket                               | See Table II |
| 73A      | Gasket, Volute Case                   | S06271       |
| 73B      | Gasket, Balance Ring                  | S09943       |
| 89       | Seal, Mechanical Shaft                | S32015       |
| 115      | Ring, Balance                         | M06646       |
| 800A     | Capscrew, 5/8 - 11 x 1-1/2" (12 Req.) | S26999       |
| 800B     | Capscrew, 3/8 - 16 x 1" (4 Req.)      | S26826       |
| 800C     | Capscrew, 1/2 - 13 x 1-1/2" (4 Req.)  | S26916       |
| 800D     | Capscrew, 5/8 - 11 x 1-1/2" (4 Req.)  | S26999       |
| 805      | Washer, Lock                          | S23038       |
| 810      | Plug, Pipe 1/2" NPT (6 Req.)          | S23717       |
| 815      | Ring, Retaining                       | S16767       |
| •        | Plug, Pipe 1/8" NPT (In Bracket)      | S23714       |

• Not illustrated.

**Table II**

| HP | PH | Bracket No. | "AK" Fit | "U" Dim. | Motor Frame |
|----|----|-------------|----------|----------|-------------|
| 15 | 3  | H03300      | 8-1/2"   | 1-1/4"   | 254JM       |
| 20 | 3  | H03300      | 8-1/2"   | 1-1/4"   | 256JM       |
| 25 | 3  | H03301      | 12-1/2"  | 1-1/4"   | 284JM       |

**NOTE 1:** For an explanation of the tabulated material found on this page and for impeller key location, refer to **Supplement A** located at the beginning of this section.

**NOTE 2:** For seal flush line details, see **Supplement D**.