

BI SERIES

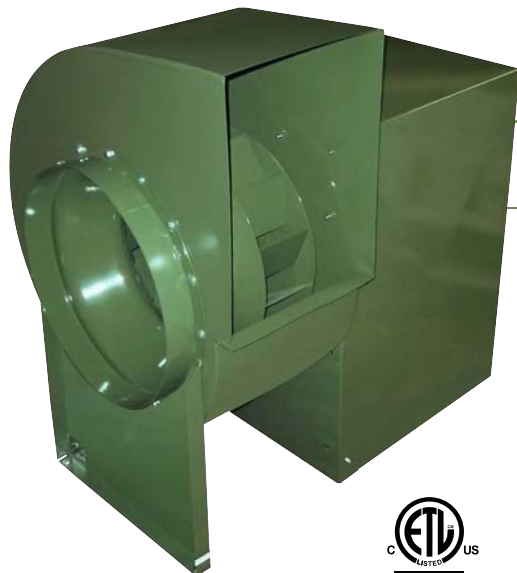
Belt Drive Utility Blowers

FEATURES

- Complete range of sizes from 10" to 36".
- Full AMCA Class 1 Operation.
- Non-overloading backward inclined (BI) welded wheels.
- Aluminum wheel - (AMCA type B classification for spark resistant construction) - available as an option.
- Discharge position can be field rotated to any of 8 discharge positions.
- Counter clock wise rotation is standard. Clock wise available.
- Outlet flanges on models BI-24 to BI-36.
- Temperature Ratings - without a heat slinger 250° F with a heat slinger, steel wheel 400° F, aluminum wheel 300° F.
- Motor access from 3 sides.
- Sloped motor base for ease of motor installation.
- Vented motor and drive compartment cover, with handles, for safety & weather protection.
- 16 gauge or heavier blower housing.
- Heavy duty pillow block ball bearings.



AVAILABLE WITH MOTORS & DRIVES FACTORY INSTALLED. CONSULT OUR DELTAIR FAN SELECTION SOFTWARE FOR DETAILS.



BI SERIES



PERFORMANCE SPECIFICATIONS

TYPICAL MAXIMUM CFM @ SP

MODEL	1" SP	2" SP	3" SP	4" SP	5" SP	Min HP	Max HP
BI-10	2300	2100	1700	1500	1300	1/2	2
BI-13	4000	3700	3400	3000	2600	1/2	5
BI-16	5800	5400	4900	4300	3700	3/4	7 1/2
BI-18	7300	6800	6200	5600	4700	3/4	7 1/2
BI-20	8500	8000	7200	6500	5200	1	7 1/2
BI-24	13000	12000	11000	10000	8000	1 1/2	15
BI-27	16000	15000	14000	12500	11000	1.5	15
BI-30	18000	17000	16000	14000	12000	2	15
BI-36	28000	26000	24000	22000	19000	3	25

Power rating (BHP) does not include transmission losses. Performance certified is for installation type B: Free inlet, Ducted outlet. Performance ratings do not include the effect of appurtenances (accessories).

CFM values listed above are summarized for convenience.

FOR FAN CURVES & FULL PERFORMANCE DATA, CONSULT OUR DELTAIR SOFTWARE. DOWNLOAD DELTAIR @ WWW.CANARM.COM/DELTAIR



MOTOR AND DRIVE COMPARTMENT WITH COVER REMOVED TO ILLUSTRATE 3 SIDE MOTOR ACCESS AND SLOPED MOTOR BASE FOR BELT TENSIONING.



Canarm certifies that the BI Series shown herein are licensed to bear the AMCA Seal. The ratings shown are based on tests and procedures performed in accordance with AMCA Publication 211 and comply with the requirements of the AMCA Certified Ratings Programme.

RELATED MODEL

BI-RM & BI-RM-HS SERIES

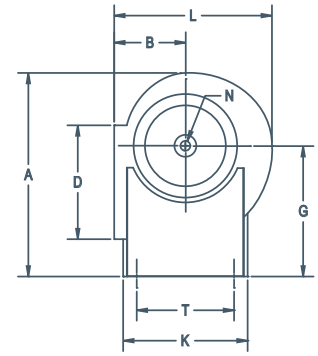
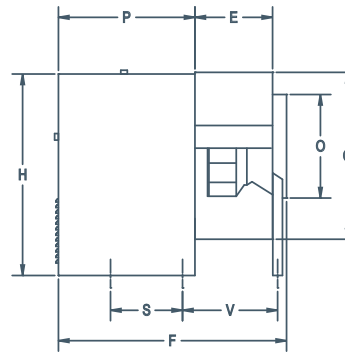
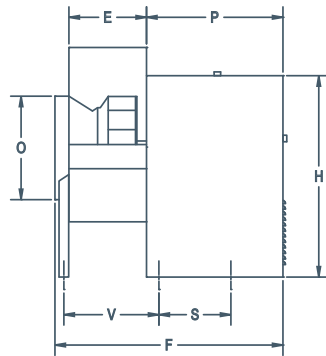
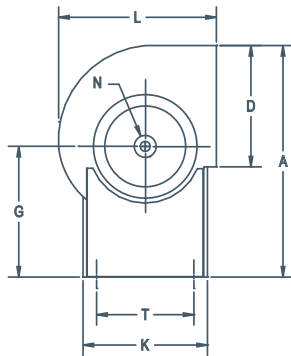
Belt Drive Utility Blowers.



BI & BI-RM SERIES

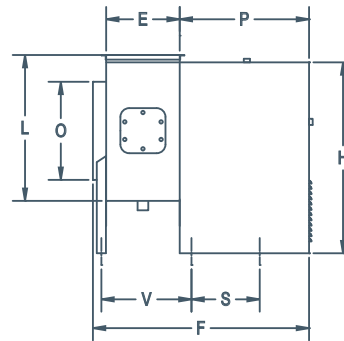
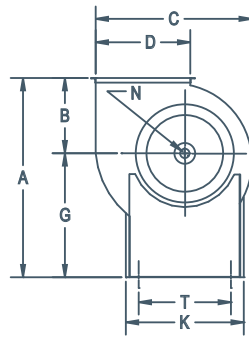
Belt Drive Utility Blowers

DIMENSIONS



MODELS BI-10 TO BI-27
(STANDARD TOP HORIZONTAL DISCHARGE)

MODELS BI-30 TO BI-36
(STANDARD BOTTOM HORIZONTAL DISCHARGE)



MODELS BI-RM(-HS)-10 TO BI-RM(-HS)-24
(UL 762 LISTED FOR REMOVAL OF COOKING VAPOURS)

MODEL	OUTLET																	SHAFT DIA.	INLET	UNIT WEIGHT (LBS) (without motors & drives)
	A (STANDARD MODELS)	A (BI-RM MODELS)	B	C	D	E	F	G	H	K (CABINET WIDTH)	L	N	O	P	S	T	V			
BI-10	26 3/4"	23 5/8"	8 3/8"	18 15/16"	11 5/16"	8 1/4"	27 3/4" No Leg on BI-10	15 1/4"	21 5/16"	13 3/16"	17 3/8"	3/4"	11"	17 1/4"	11 3/4"	11 7/16"	--	78		
BI-13	34 5/16"	30 13/16"	10 3/4"	24 1/2"	14 3/8"	10 3/4"	34 1/8"	20 1/16"	29 1/8"	16 9/16"	22 1/2"	1"	14 3/8"	21 1/8"	11 1/2"	14 11/16"	14"	134		
BI-16	39 3/8"	34 11/16"	12 11/16"	29 7/8"	17 5/8"	13 1/8"	36 1/2"	22"	31"	16 9/16"	26 7/8"	1 3/16"	17 3/8"	21 1/8"	11 1/2"	14 11/16"	16 3/8"	162		
BI-18	41 1/4"	35 13/16"	13 13/16"	33"	19 3/8"	14 1/2"	37 7/8"	22"	31"	16 9/16"	29 5/8"	1 3/16"	19 3/8"	21 1/8"	11 1/2"	14 11/16"	17 3/4"	172		
BI-20	49 1/8"	42 15/16"	14 15/16"	36 1/4"	21 1/4"	15 3/4"	46 7/16"	28"	40 7/8"	25 1/4"	32 1/4"	1 3/16"	21 1/4"	27 11/16"	14 5/8"	22 3/4"	19 3/4"	289		
BI-24	57 7/8"	49 13/16"	17 13/16"	44 3/8"	26"	19 3/8"	51 5/16"	32"	46 1/2"	28 15/16"	39"	1 7/16"	26"	28 15/16"	18 5/16"	25 1/2"	23 3/8"	385		
BI-27	60 1/2"	51 7/16"	19 7/16"	48 7/8"	28 5/8"	21 1/4"	53 3/16"	32"	46 1/2"	28 15/16"	42 3/4"	1 7/16"	28 5/8"	28 15/16"	18 5/16"	25 1/2"	25 1/4"	411		
BI-30	65 15/16"	68 3/16"	24 7/8"	54 7/16"	31 3/4"	23 5/8"	57 5/8"	43 5/16"	64 3/4"	43 3/8"	50 3/4"	1 11/16"	31 3/4"	32"	17"	41"	28 9/16"	517		
BI-36	70 15/16"	68 15/16"	25 1/2"	66 1/16"	38 5/8"	28 3/4"	62 3/4"	43 7/16"	64 3/4"	43 3/8"	57"	1 15/16"	38 3/4"	32"	17"	41"	33 11/16"	747		

ACCESSORIES

- V-Cap
- Bolted Clean Out Door
- Heat Slinger
- Vibration Isolators

- Shaft Seal
- Corrosion Resistant Coating
- Aluminum Wheel
- Back Draft Dampers

- Inlet & Outlet Screens
- 2" Drain Fitting

For more information on accessories, see page C14.