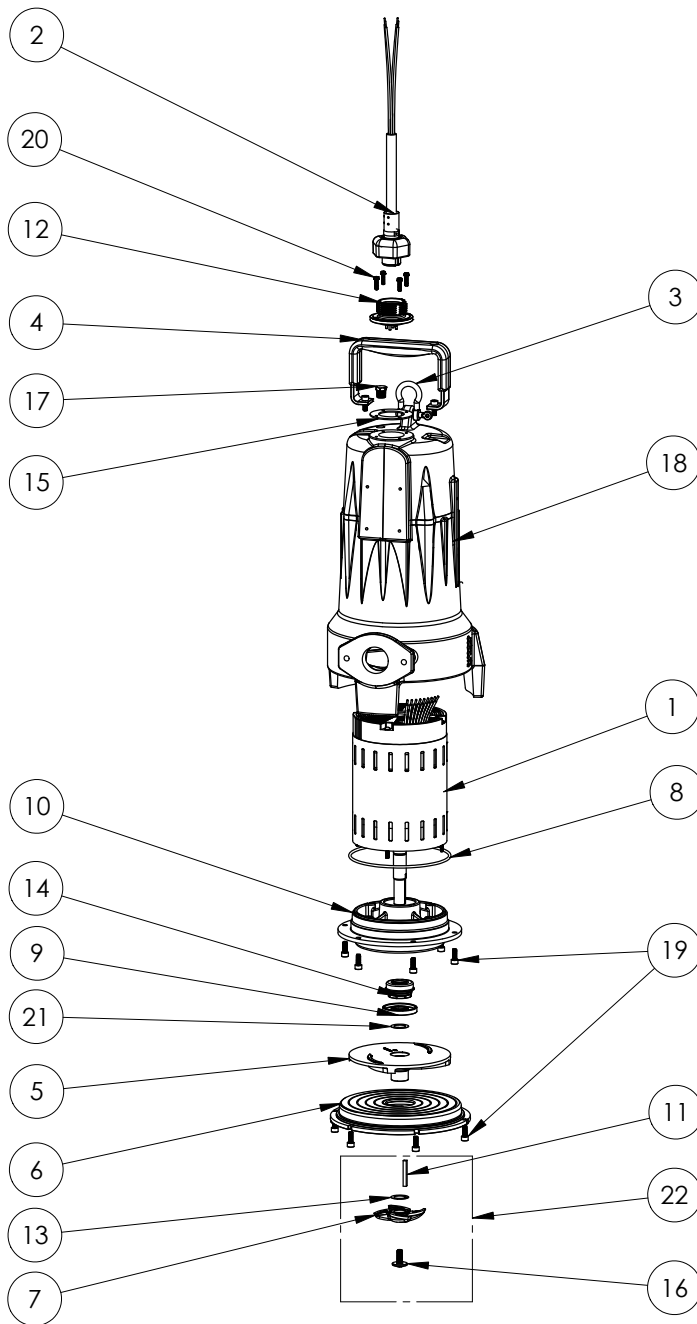


LSG203M (B28)



LSG203M

LSG203M (B28)

| # | PART # | DESCRIPTION | QTY | Note |
|----------|---------------|------------------------------------|------------|-------------|
| 1 | 5628000 | MOTOR | 1 | [1] |
| 2 | K001357 | POWER CORD, 25FT | 1 | |
| 3 | 5611000 | SHACKLE | 1 | |
| 4 | 5613000 | HANDLE | 1 | |
| 5 | K001538 | GRINDER IMPELLER KIT | 1 | |
| 6 | 5615000 | CUTTER PLATE | 1 | |
| 7 | 5616900 | ROTARY CUTTER | 1 | |
| 8 | 5617000 | O-RING | 1 | |
| 9 | 5618000 | DOUBLE LIP SEAL | 1 | [1] |
| 10 | 5632000 | MOTOR PLATE | 1 | [1] |
| 11 | 5635000 | KEY | 1 | |
| 12 | 5629000 | GRINDER CORDPLATE | 1 | |
| 13 | K001445 | ROTARY CUTTER SHIM KIT | 1 | |
| 14 | 5633000 | 3/4" UNITIZED SHAFT SEAL | 1 | [1] |
| 15 | 5060000 | CORD PLATE GASKET | 1 | |
| 16 | 56360A0 | FLANGED IMPELLER BOLT | 1 | |
| 17 | 5071000 | BRASS OIL PLUG | 1 | |
| 18 | 560000R | OMNIVORE HOUSING | 1 | |
| 19 | 5646000 | CAP SCREW, SHCS, 1/4-28 X 9/16" SS | 14 | |
| 20 | 8064000 | #8-32 x 5/8 HEX WASHER HEAD SCREW | 4 | |
| 21 | 5627000 | SHIM WASHER | 1 | |
| 22 | K001139 | ROTARY CUTTER KIT | 1 | [2] |

PART NOTES:

- [1] - Part requires factory authorized service. Contact Liberty Pumps at 1-800-543-2550
- [2] - ForLSG GrinderCutter Replacment Instructions see LSG Grinder Cutter Replacement