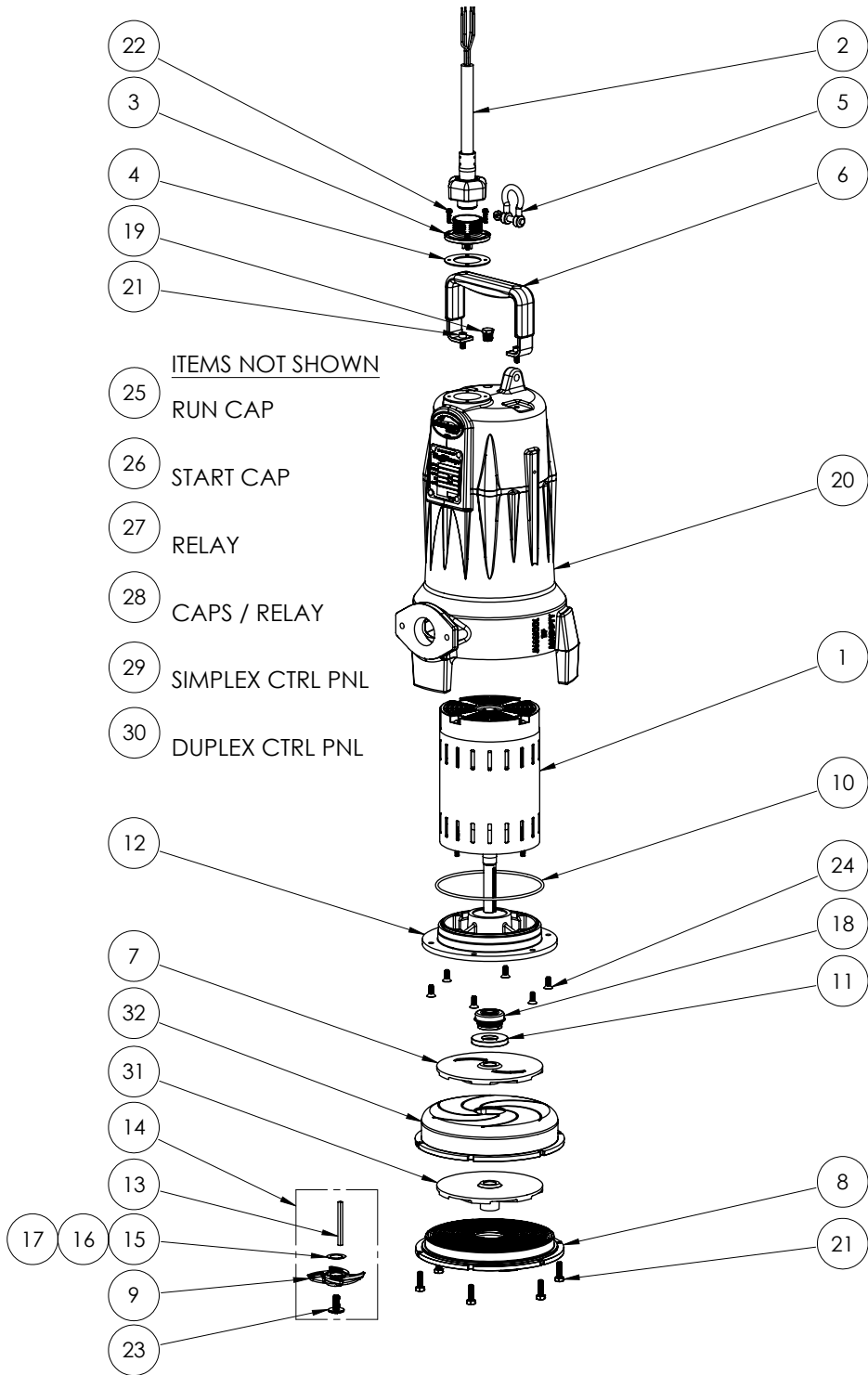


LSGX202M-C (B52)



LSGX202M-C B52

**LSGX202M-C**

**LSGX202M-C (B52)**

<b>#</b>	<b>PART #</b>	<b>DESCRIPTION</b>	<b>QTY</b>	<b>Note</b>
1	5740000	MOTOR	1	[1]
2	K001358	POWER CORD, 35FT	1	
3	5629000	GRINDER CORDPLATE	1	
4	5060000	CORD PLATE GASKET	1	
5	5611000	SHACKLE	1	
6	5613000	HANDLE	1	
7	K001538	GRINDER IMPELLER KIT	1	
8	K001395	CUTTER PLATE	1	
9	5616900	ROTARY CUTTER	1	
10	5617000	O-RING	1	
11	5618000	DOUBLE LIP SEAL	1	[1]
12	5632000	MOTOR PLATE	1	[1]
13	56350A0	KEY	1	
14	K001139	ROTARY CUTTER KIT	1	[2]
15	K001445	ROTARY CUTTER SHIM KIT	1	
16	K001445	ROTARY CUTTER SHIM KIT	1	
17	K001445	ROTARY CUTTER SHIM KIT	1	
18	5633000	3/4" UNITIZED SHAFT SEAL	1	[1]
19	50710A0	PIPE PLUG, 1/4" HEX HD BRASS NPTF	1	
20	573300R	OMNIVORE HOUSING, 2 STAGE	1	
21	8103000	SCREW 1/4-20x5/8" HX SKT SS	8	
22	8064000	#8-32 x 5/8 HEX WASHER HEAD SCREW	4	
23	56360A0	FLANGED IMPELLER BOLT	1	
24	8018000	1/4-20 x 5/8 SLOTTED FLAT HEAD BOLT	6	
25	K001228	RUN CAPACITOR	1	
26	K001227	START CAPACITOR	1	
27	K001315	RELAY	1	
28	K001316	CAPS / RELAY	1	
29	SXHC24=3	SIMPLEX CONTROL PANEL	1	
30	AE24HC=3	DUPLEX CONTROL PANEL	1	

**PART NOTES:**

- [1] - Part requires factory authorized service. Contact Liberty Pumps at 1-800-543-2550
- [2] - ForLSG GrinderCutter Replacment Instructions see LSG Grinder Cutter Replacement