

Turbine

MODEL: SM5 60 HZ GENERAL PUMP DESCRIPTION

| | |
|---------------------------|---|
| Construction: | Cast iron stainless steel fitted |
| Capacity: | 200 - 700 GPM |
| Head: | 40-600 feet |
| Staging: | 1-6 |
| Minimum flow: | 200 GPM |
| Maximum working pressure: | 175 PSI with ANSI Class 125 flange (up to 4 stage) 400 PSI with ANSI Class 250 flange (5 and 6 stage) |
| Temperatures: | Liquid temperature from -13°F (-25°C) to 150°F (65°C) |
| Solids handling: | Although not recommended, the pump may pass a 1/2" solid. |
| Piping Connections: | Suction and discharge openings are 4" with ANSI Class 125 or 250 flanges. |

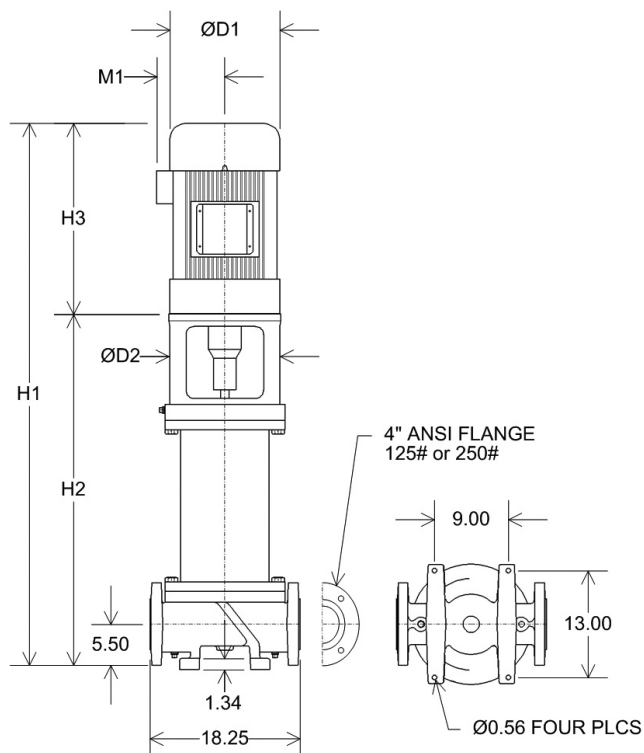
| Component Description | Material | ASTM Spec. |
|---------------------------|------------------------------------|----------------------------|
| Motor Support | Cast Iron | A48 Class 30 |
| Shaft Coupling | Cast Iron | A48 Class 30 |
| Mechanical Seal | Type 316SS, Carbon Silicon Carbide | |
| Seal Cover | Cast Iron | A48 Class 30 |
| Casing | Steel or Type 316SS | A53 Grade A or A312 S31600 |
| Casing and Suction O-ring | Nitrile | D2000 2BG715B14 |
| Pump Shaft | Type 416SS | A582 S41600 |
| Intermediate Bowl | Cast Iron | A48 Class 30 |
| Bowl Bearing | Bronze | B854 C90300 |
| Impeller | Type 316SS | A744 CF8M |
| Taperlock | Type 316SS | A276 S31600 |
| Suction Cover | Cast Iron | A48 Class 30 |
| Pump Body | Cast Iron | A48 Class 30 |
| Hex Head Capscrew | Steel | SAE J429 Gr. 8 |
| Socket Head Capscrew | Steel | SAE J429 Gr. 8 |
| Washer | Steel | A108 G10180 |
| Pipe Plug | Malleable Iron | A197 |

MOTORS

Standard motors supplied by Goulds Water Technology are NEMA standard TC frame motors open drip proof, or totally enclosed fan cooled enclosures. 60 Hz, 2-pole, three phase with 1.15 S.F. For other motor options, contact the factory.

DIMENSIONS AND WEIGHTS

(All dimensions are in inches, weights are total unit weight.)



ODP Motors

| Stage | Motor | | Dimensions (inches) | | | | | | Wt. (lbs.) |
|-------|--------|----|---------------------|-------|-------|-------|-------|-------|------------|
| | Frame | HP | H1 | H2 | H3 | M1 | D1 | D2 | |
| 1 | 213TC | 10 | 46.49 | 31.19 | 15.30 | 7.93 | 10.18 | 13.63 | 487 |
| 1 | 215TC | 15 | 46.50 | 31.19 | 15.31 | 7.93 | 10.18 | 13.63 | 505 |
| 2 | 254TC | 20 | 53.63 | 38.32 | 15.31 | 7.93 | 10.18 | 13.63 | 578 |
| 2 | 256TC | 25 | 57.76 | 38.32 | 19.44 | 8.92 | 11.63 | 13.63 | 611 |
| 3 | 284TSC | 30 | 65.93 | 45.37 | 20.56 | 8.94 | 11.50 | 13.63 | 722 |
| 3 | 286TSC | 40 | 68.37 | 45.37 | 23.00 | 12.21 | 13.25 | 13.63 | 782 |
| 4 | 286TSC | 40 | 75.44 | 52.44 | 23.00 | 12.21 | 13.25 | 13.63 | 836 |
| 4 | 286TSC | 50 | 75.44 | 52.44 | 23.00 | 12.21 | 13.25 | 13.63 | 928 |
| 5 | 326TSC | 60 | 82.06 | 59.56 | 22.50 | 12.21 | 13.75 | 13.63 | 1082 |
| 6 | 364TSC | 75 | 95.19 | 66.69 | 28.50 | 12.21 | 19.25 | 13.63 | 1207 |

TEFC Motors

| Stage | Motor | | Dimensions (inches) | | | | | | Wt. (lbs.) |
|-------|--------|----|---------------------|-------|-------|-------|-------|-------|------------|
| | Frame | HP | H1 | H2 | H3 | M1 | D1 | D2 | |
| 1 | 215TC | 10 | 48.19 | 31.19 | 17.00 | 8.05 | 10.62 | 13.63 | 496 |
| 1 | 215TC | 15 | 48.19 | 31.19 | 17.00 | 8.05 | 10.62 | 13.63 | 578 |
| 2 | 256TC | 20 | 60.29 | 38.32 | 21.97 | 10.04 | 12.94 | 13.63 | 653 |
| 2 | 284TSC | 25 | 64.01 | 38.32 | 25.69 | 13.11 | 15.56 | 13.63 | 804 |
| 3 | 286TSC | 30 | 71.06 | 45.37 | 25.69 | 13.11 | 15.56 | 13.63 | 890 |
| 3 | 286TSC | 40 | 71.06 | 45.37 | 25.69 | 13.11 | 15.56 | 13.63 | 968 |
| 4 | 286TSC | 40 | 78.13 | 52.44 | 25.69 | 13.11 | 15.56 | 13.63 | 1022 |
| 4 | 326TSC | 50 | 80.23 | 52.44 | 27.79 | 14.12 | 17.35 | 13.63 | 1136 |
| 5 | 364TSC | 60 | 90.36 | 59.56 | 30.80 | 14.95 | 19.25 | 13.63 | 1330 |
| 6 | 365TSC | 75 | 97.49 | 66.69 | 30.80 | 14.95 | 19.25 | 13.63 | 1477 |

Note that some models in this product bulletin utilize the service factor when recommending a motor HP rating. For applications where the use of the service factor is prohibited, consult the factory for a motor HP recommendation.

Motor dimensions are based on Goulds Water Technology's choice motors. Other manufacturer's motor may have different dimensions.